

BID Program

Governance

Building an Effective Board

Monthly Meeting - August 2016

BE THE HOW.
WHAKAMAUA KIA TINA!



Governance



- The process of interaction and decision-making among parties involved.
- Ensures the BA remains viable and thrives at delivering membership benefits.
- Assets are protected and funds are used appropriately.

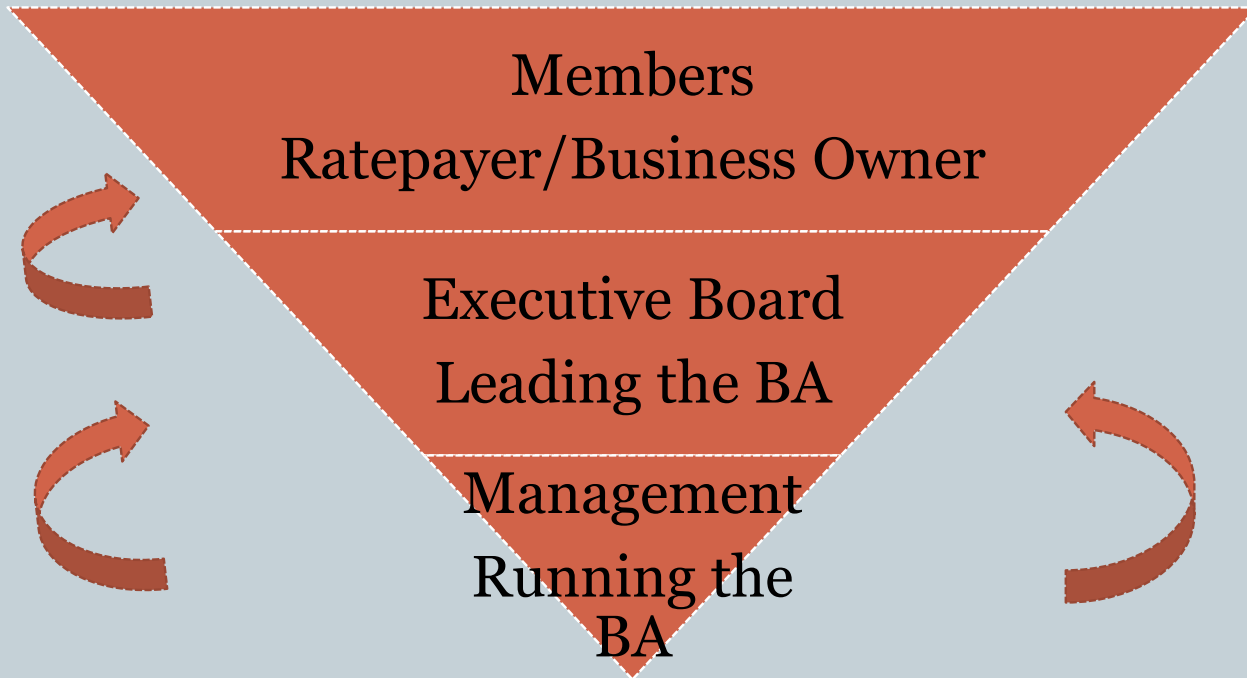
BE THE HOW.
WHAKAMAUA KIA TINA!

Governance Structure - BA



**Strategic
Accountability**

**Operational
Accountability**

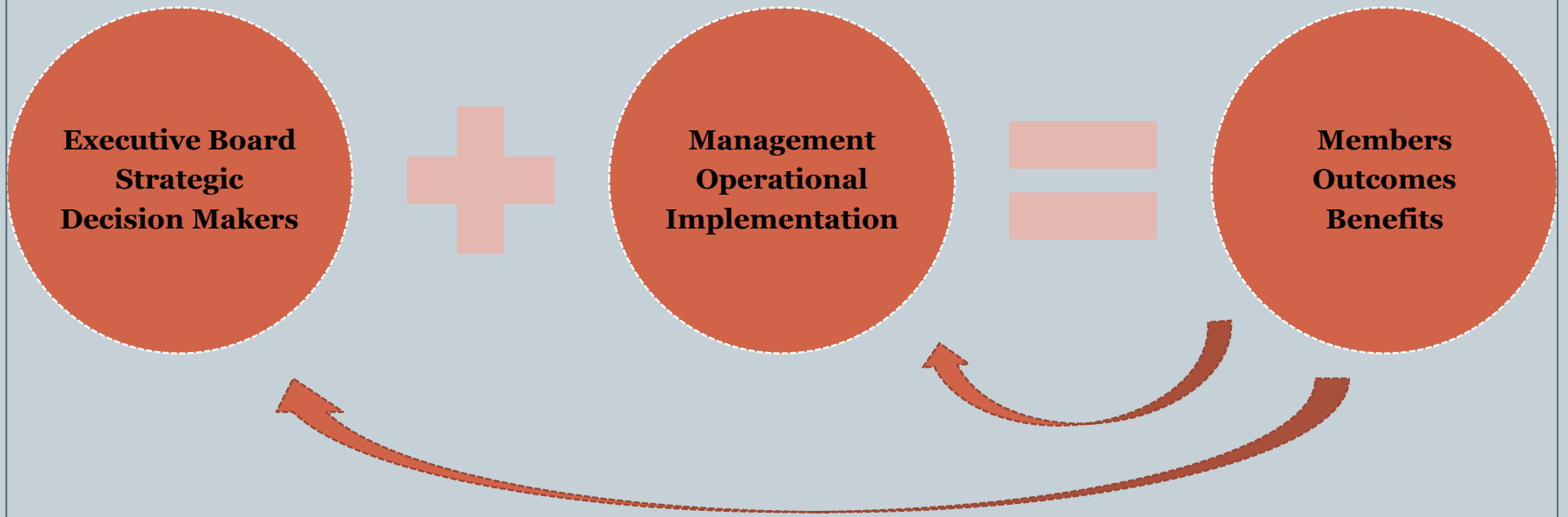


BE THE HOW.
WHAKAMAUA KIA TINA!

Governance Structure - BA



Process of interaction and information flow



BE THE HOW.
WHAKAMAUA KIA TINA!

Building an Effective Executive Board



Purpose of the Board

- Decision makers
- Set Strategic direction
- Employ & enable management
- Inform members of annual outcomes
- Accountable for decisions of the BID

BE THE HOW.
WHAKAMAUA KIA TINA!



Building an Effective Executive Board



Plan for the right Board Members

- Mix of skills – strategic outcomes
- Representative from business sectors
- Strong relationships with members
- Expression of Interest Register
- Planning starts post AGM each year

BE THE HOW.
WHAKAMAUA KIA TINA!

Building an Effective Executive Board



Prepare Prospective Board Members

- Board Charter – requirements of Board
- Insurance cover – board protection
- Time commitment
- Sharing of Strategic direction & involvement (plans)
- Nomination & voting process

BE THE HOW.
WHAKAMAUA KIA TINA!

Building an Effective Executive Board



Post AGM – 1st Committee Meeting

- Induction of new board – roles & responsibilities
- Appoint Chair, Treasurer & Secretary (or at AGM)
- Inform - meeting requirements, agenda, documents, minutes, decisions required & voting process
- Related parties register
- Acceptance of Board Charter (approval noted in the minutes)

BE THE HOW.
WHAKAMAUA KIA TINA!

Executive Board



Ongoing Support

- Board strategy
- Board development, coaching & mentoring
- Professional Association Membership
- Succession planning within the board

BE THE HOW.
WHAKAMAUA KIA TINA!

Executive Board



Ongoing Support

- Links to sample resources/webinars
- <https://www.iod.org.nz/Director-Development/Focused-courses/Webinars>
- <https://www.youtube.com/user/CommunityResearchNZ>
- <http://www.effectivegovernance.co.nz/services/>
- <https://diacommunitynet.cwp.govt.nz/resources/community-resource-kit/4-2-governance-governance-and-management/>

BE THE HOW.
WHAKAMAUA KIA TINA!

Governance



Open discussion and sharing of experiences

BE THE HOW.
WHAKAMAUA KIA TINA!